

11 Individual weeks of

2016

# SUMMER WORKSHOPS

Beginning June 6th

Morning and/or afternoon sessions  
Discovery Workshops - 4 years old  
Creative Workshops - 5/6 & 7/8 years old  
RobotiKs - 7-10 years old



THE WOODLANDS  
Children's  
MUSEUM



ENROLL TODAY

PHONE: 281-465-0955 OR FAX: 281-465-0956

OR SIGN UP AT

4775 W. PANTHER CREEK DRIVE #280, THE WOODLANDS, TX 77381

VISIT OUR WEBSITE

WOODLANDSCHILDRSENSMUSEUM.ORG



# DISCOVERY WORKSHOPS

Especially designed for 4 year-olds, these classes magically enforce creative play for appropriate childhood development in an environment that fosters creativity and promotes self-expression. Children discover and explore new topics presenting hands-on activities to excite and develop a young child's imagination through the arts, dramatic play, while squishing, sorting, mixing, swirling, collecting or building.

**CLASSES MEET FOR THREE HOURS, TWICE A WEEK ON MONDAY/WEDNESDAY\* OR TUESDAY/THURSDAY. PLEASE CHECK CLASS SCHEDULE FOR DATES AND TIMES.**

## A BOX OF IDEAS

The creative ideas are endless...if you give a child a box. Our curriculum expands the creative process using simple cardboard boxes to create safe havens and other useful and pretend objects for imaginative travel and play. Now embellish that with a flashlight, a few blankets and sheets and the journey is like "Neverland."

## HATS OFF TO DR. SEUSS

NEW!

Celebrate the wacky and magical imagination of Dr. Seuss, whose literary influence has captivated the attention of young children to discover rhyming concepts, alliteration, vocabulary, counting and color. Children will enjoy the company of delightful characters through various popular books, while building vocabulary and discovering some simple life lessons through art curriculum and hands-on activities. Oh, the places they'll go.....

## CRAZY ABOUT CRITTERS

Filled with stories, games, crafts and special guest presenters sharing their furry, feathered and scaly animal friends, this class builds self-confidence fulfills the natural curious nature of children, while discovering some of nature's "crazy critters."

## INSECTS DINOSAURS AND MAMMALS

Filled with crafts and hands-on activities, young paleontologists become familiar with many different dinosaurs and other strange and exotic prehistoric creatures. Discover various facts about "a bug's life" while building an insect house and discover how mammals are like you and me.

## KITCHEN CHEMISTRY

Hands-on activities invite children to discover and formulate cause and affect relationships with familiar objects. Become a mad mixer and turn some well-known and some not very well-known substances together to make slime or bubbly concoctions to gather facts about volcanoes and other related topics.

## LEGO® FRENZY

Little engineers design, build and create with various beginner and advanced Lego® kits discovering the basic principles of construction and engineering, while building critical thinking skills.

\*The Week of July 4th classes will meet Tuesday/Thursday and Wednesday/Friday.





4 YEAR-OLDS

## PRINCESS AND PIRATE PLAY

Focusing on swashbuckling creative and imaginative play, pirates make hats, masks and necklaces, while painting and embellishing cardboard box pirate ships. Princesses make wands, embellish wings and imagine life as a princess painting and embellishing a cardboard box castle. Of course, we know there are girl pirates and that pirates can use magic wands to help find the "loot." Aarrgh!!!

## STAMP YOUR ART OUT

Experimenting with different handmade stamps, young artists discover the versatility of this medium and delighting in the process of stamping by printing t-shirts, cards and wall hangings.

## STORYBOOK ART

Children are presented with opportunities to be aware of a chosen children's book's graphics and illustrations by combining tactile artistic activities that accompany the style of the story's illustrator and the theme of the story. While enjoying the story, children become more aware of the illustrations and the medium used by the artist to illustrate the story.

## SUPER HEROES ADVENTURE

Superheroes have captivated the imaginations of children for many years. Young super heroes will decorate their own capes and masks, play familiar games to discover interesting facts about well-known super-heroes and make special "super power" snacks.

Same workshops...  
different year...  
new projects and  
activities!

## TO INFINITY AND BEYOND

Become an amateur astronomer, while pretending to travel to the depths of the universe, discovering exciting facts about our solar system and creating your own space vest and other space creations.

## WHEELS WINGS AND WHISTLES

In this on-the-go class, we will be pushing, floating and tooting our whistles exploring planes, trains and automobiles while designing our own method of transportation.

## YOUNG AT ART

Experience an age-appropriate art-making journey into the world of color, shapes and textures through the lives of some well-known artists creating unusual art sculptures and mobiles while combining artistic materials with found objects. Young artist will delight in the process of experimenting with various mediums while developing an awareness of art in everyday life.





# ARTRAGEOUS WORKSHOPS

The young artist with a serious love for art will journey through our metropolis of art, exploring various art mediums such as paper maché, clay building, painting with assorted mediums or extended drawing, while encouraging young artists to express their own impressions and insights into their artwork. This wonderfully ambitious curriculum draws from all of our art classes where children encounter introductions to great artists, art around the world, and reflections of historical movements such as the peace, love and rock 'n roll movements of the 60's to create "artful" experiences, all through a festival of mediums focusing on the process of art to explore new art ideas and techniques.

## ART AROUND THE WORLD

Young artists combine fun and the creativity of art with the mysteries of history, the lure of geography and the diversity of various cultures of the world. This journey is one with an interactive hands-on approach of various different countries focusing on the use of different art mediums and experiences. Children's best discoveries of global awareness are made when experiences are tactile and meaningful in their everyday life.

## CRAZY ABOUT CULTURES

Every day a three-hour workshop provides hands-on interactive activities to reflect an imaginary journey through one country or continent, while discovering various facts about foods, clothing, art and languages. Children really enjoy the introduction to different food reflective of the particular culture brought in for that particular workshop.

## DISCOVERING GREAT ARTISTS

Explore the styles and techniques of some of the world's greatest artists. Each art process focuses on one style and one artist. A brief biography and portrait of each artist assists children by inspiring them or adding depth to their own art. Artistic projects create opportunities for children to expand the creative experience and to "learn" by "doing."

## MASK MANIA

The art of making masks has been traced back to ancient times in Greece, medieval theatrical performances, tribal rituals from various continents and other cultural influences and has been used as a method of separating economic stature among inhabitants. This dynamic workshop presents a celebration of different cultures using different mediums to entice children's participation in the creation and embellishment of his/her own mask while discovering facts about different cultures and pastimes.

## SCIENTIFICALLY ARTRAGEOUS

Combining the curiosity of science and the beauty of art, children will embrace an exciting opportunity to discover basic concepts of science through art experiences. Knowing that children love to explore, experiment and discover, the focus is to build on this natural curiosity while combining the beauty of art and the fascination of science. Children will share this journey discovering science magic tricks and exploring the physical and chemical properties of different elements, compounds and mixtures.



## PAPER ANTICS

Journey through the art of creating and embellishing various paper projects and experience the process of making paper from used and discarded paper products. This is a delightful exploration of the endless possibilities of how old and new paper or little and big paper can be used to create other "art" pieces such as origami, paper mache, jewelry and more.



5/6 & 7/8 YEAR-OLDS

# CREATIVE WORKSHOPS

## A TASTE OF TEXAS

What is so special about Texas? Well, everything, since nearly everything is bigger in Texas. Experience the music and food, while discovering interesting trivia about our unique state and explore the history that defines our rich culture all presented with hands-on creative projects. Bring an appetite for the tasty barbeque, ya'll.

## CONSTRUCTION WIZARDRY

Build beyond the imagination, while discovering the basics of engineering, construction design, teamwork and building structures to test the strength and practicality of architect's designs with new and recycled materials. Young architects can create buildings from milk cartons, water towers from food storage containers or bridges from cereal boxes and used plastic bags to create cities, habitats on another planet or whatever else their imagination presents.

## HOUSE STORIES

NEW!

Children experience an imaginary journey around the globe to different climates "surveying" some of the coolest traditional houses around the world. This "journey" will empower them to build simple reproductions of houses or villages using local materials like clay, rattan, wood/bamboo, and more. Children discover and implement the fundamentals of construction, materials, geography and environment through hands-on projects. Using only a few tools of the trade like an atlas, maps, pictures, sketch books, pencils, measuring tape and a keen eye, children discover the how and why of construction basics.

## GOT SCIENCE?

Children love science because it catches their attention and engages their curiosity. But it does not have to just sizzle to create curiosity and intense moments of observation. Our diverse curriculum explores some physical and chemical properties of different elements, compounds and mixtures as well as venturing into topics like force and motion constructing and launching small rockets, hands-on "critter" investigations and observations, building kaleidoscopes to discover light refraction and more. Different areas of science from natural sciences to social sciences are explored each time the class is offered so that those attending do not get a repeat class but an introduction to a whole new experience. Brace yourselves as we inspire exploration and discovery.

## LEGO® FRENZY MEETS "RIGHTEOUS" ROBOTIKS

Using creative thinking and problem solving abilities, children design and build models with LEGO® pieces and kits to satisfy a specific purpose while exploring basic construction concepts, simple machines and how gears work. Young engineers progress to WeDo™, designed for the early elementary learner, to introduce boys and girls to the early principles of robotics. Children build LEGO® models featuring working motors and sensors, then program their robot models to write stories, solve problems or create innovative projects. Curriculum is designed to develop skills in science, simple technology, engineering and mathematics. Robotiks is remarkable!!!!

## SHAKIN' IT UP WITH SHAKESPEARE

This highly energized, informal, but structured, workshop promotes self-expression, critical thinking, creativity and teamwork. An introduction to Shakespeare presents young thespians with the opportunity to explore basic aspects of acting, movement and character development, as well as, a brief encounter in the interpretation of the language of Shakespeare. Class work includes basic theatre games to develop the ability to tell stories collaboratively and work in the moment, acting out chosen scenes from age-appropriate Shakespeare plays while building character development, strengthening reading and vocabulary and collaborating on the use and making of minimal stage props and/or costumes.

Same workshops...  
different year...  
new projects  
and activities!



7 TO 10 YEAR OLDS

# ROBOTIKS

## Offered

Week 2 June 13-June 17

Week 3 June 20-June 24

Week 6 July 11-July 15

Week 7 July 18-July 22

Week 9 August 1-August 5

## EARLY ROBOTICS

Engineering and Robotics Learned Young

Created by NASA, EARLY robotics is a program exposing 7-10 year-olds to engineering while developing a strong understanding of the basic fundamentals of building and mechanical principles. Building robots and realistic motorized models from LEGO® kits in a team-building atmosphere, teams select pilots to operate the robot using basic on/off switches manipulating through given obstacles and challenges to help complete the mission. Student engineers gear up for a friendly competition on the final day.

## ADVANCED EARLY ROBOTICS

Designed for the students who have previous EARLY robotics experience from other qualified programs and/or have participated in EARLY competitions, this program challenges students to work more quickly through the curriculum and take strategies to the next level. The curriculum will encompass more design and more challenging missions.



Same workshops...  
different year...  
new ideas and  
curriculum!



## SNACKING

Children must bring their own healthy snack every day of the week. Water will be provided by the museum.

## DID YOU KNOW?

In compliance with Let's Move and Good to Grow initiatives, The Woodlands Children's Museum provides students with a short time of movement during classes to get the students' "wiggles" out.



## LUNCH BUNCH

LUNCH BUNCH is offered for children who...

- are signed up for both morning and afternoon classes.
- attend morning classes but cannot be picked up at noon.
- attend afternoon classes but need to be dropped off before 1:00 p.m.

Children are to bring a sack lunch and a drink. A staff member will assemble the children and escort them to a classroom where they will eat lunch and play quiet games, listen to a story, and more.

Those who are attending an afternoon class will be escorted to that teacher; those who are leaving the museum will be released to the parent upon sign-out.

Price is \$15 per week or \$5 per day.



# THE MUSEUM IS OPEN 7 DAYS A WEEK FROM MEMORIAL DAY TO LABOR DAY.

VISIT US AT [WOODLANDSCHILDRENSMUSEUM.ORG](http://WOODLANDSCHILDRENSMUSEUM.ORG) TO  
SEE OUR ACTIVITY CALENDAR AND SPECIAL EVENTS!



# WEEKLY CLASS SCHEDULE

## WEEK 1 (JUNE 6-JUNE 10)

AGE	CLASS TITLE	DAY	TIME	MEMBER	NON MEMBER
4	LEGO® Frenzy	M/W	9am-Noon	\$49	\$69
4	A Box of Ideas	T/Th	9am-Noon	\$49	\$69
5&6	A Taste of Texas	M-F	9am-Noon	\$114	\$134
5&6	ARTrageous Workshop	M-F	1pm-4pm	\$114	\$134
7&8	A Taste of Texas	M-F	9am-Noon	\$114	\$134
7&8	ARTrageous Workshop	M-F	1pm-4pm	\$114	\$134

## WEEK 2 (JUNE 13-JUNE 17)

AGE	CLASS TITLE	DAY	TIME	MEMBER	NON MEMBER
4	Super Heroes Adventure	M/W	9am-Noon	\$49	\$69
4	Stamp Your Art Out	T/Th	9am-Noon	\$49	\$69
5&6	Got Science?	M-F	9am-Noon	\$114	\$134
5&6	Crazy About Cultures	M-F	1pm-4pm	\$114	\$134
7&8	Got Science?	M-F	9am-Noon	\$114	\$134
7&8	Crazy About Cultures	M-F	1pm-4pm	\$114	\$134
7-10	EARLY Robotics/Advanced Robotics	M-F	1pm-4pm	\$134	\$154

## WEEK 3 (JUNE 20-JUNE 24)

AGE	CLASS TITLE	DAY	TIME	MEMBER	NON MEMBER
4	Kitchen Chemistry	M/W	9am-Noon	\$49	\$69
4	Hats Off to Dr. Seuss	T/Th	9am-Noon	\$49	\$69
5&6	Shakin' It Up With Shakespeare	M-F	9am-Noon	\$114	\$134
5&6	Mask Mania	M-F	1pm-4pm	\$114	\$134
7&8	Shakin' It Up With Shakespeare	M-F	9am-Noon	\$114	\$134
7&8	Mask Mania	M-F	1pm-4pm	\$114	\$134
7-10	EARLY Robotics/Advanced Robotics	M-F	9am-Noon	\$134	\$154

## WEEK 4 (JUNE 27-JULY 1)

AGE	CLASS TITLE	DAY	TIME	MEMBER	NON MEMBER
4	Princess and Pirate Play	M/W	9am-Noon	\$49	\$69
4	To Infinity and Beyond	T/Th	9am-Noon	\$49	\$69
5&6	LEGO® Frenzy Meets "Righteous" Robotiks	M-F	9am-Noon	\$114	\$134
5&6	Discovering Great Artists	M-F	1pm-4pm	\$114	\$134
7&8	LEGO® Frenzy Meets "Righteous" Robotiks	M-F	9am-Noon	\$114	\$134
7&8	Discovering Great Artists	M-F	1pm-4pm	\$114	\$134

## WEEK 5 (JULY 5-JULY 8) \*4 day week

AGE	CLASS TITLE	DAY	TIME	MEMBER	NON MEMBER
4	Wheels, Wings & Whistles	W/F	9am-Noon	\$49	\$69
4	LEGO® Frenzy	T/TH	9am-Noon	\$49	\$69
5&6	Construction Wizardry	T/W/TH/F	9am-Noon	\$94	\$114
5&6	Scientifically ARTrageous	T/W/TH/F	1pm-4pm	\$94	\$114
7&8	Construction Wizardry	T/W/TH/F	9am-Noon	\$94	\$114
7&8	Scientifically ARTrageous	T/W/TH/F	1pm-4pm	\$94	\$114

Same workshops...different year...  
new ideas and curriculum!



## WEEK 6 (JULY 11 TO JULY 15)

AGE	CLASS TITLE	DAY	TIME	MEMBER	NON MEMBER
4	Young at Art	M/W	9am-Noon	\$49	\$69
4	Insects, Dinosaurs and Mammals	T/Th	9am-Noon	\$49	\$69
5&6	Paper Antics	M-F	9am-Noon	\$114	\$134
5&6	Art Around the World	M-F	1pm-4pm	\$114	\$134
7&8	Paper Antics	M-F	9am-Noon	\$114	\$134
7&8	Art Around the World	M-F	1pm-4pm	\$114	\$134
7-10	EARLY Robotics/Advanced Robotics	M-F	9am-Noon	\$134	\$154

## WEEK 7 (JULY 18-JULY 22)

AGE	CLASS TITLE	DAY	TIME	MEMBER	NON MEMBER
4	To Infinity and Beyond	M/W	9am-Noon	\$49	\$69
4	Princess and Pirate Play	T/Th	9am-Noon	\$49	\$69
5&6	Discovering Great Artists	M-F	9am-Noon	\$114	\$134
5&6	Got Science?	M-F	1pm-4pm	\$114	\$134
7&8	Discovering Great Artists	M-F	9am-Noon	\$114	\$134
7&8	Got Science?	M-F	1pm-4pm	\$114	\$134
7-10	EARLY Robotics/Advanced Robotics	M-F	9am-Noon	\$134	\$154

## WEEK 8 (JULY 25- JULY 29)

AGE	CLASS TITLE	DAY	TIME	MEMBER	NON MEMBER
4	LEGO® Frenzy	M/W	9am-Noon	\$49	\$69
4	Storybook Art	T/Th	9am-Noon	\$49	\$69
5&6	Crazy About Cultures	M-F	9am-Noon	\$114	\$134
5&6	Shakin' It Up With Shakespeare	M-F	1pm-4pm	\$114	\$134
7&8	Crazy About Cultures	M-F	9am-Noon	\$114	\$134
7&8	Shakin' It Up With Shakespeare	M-F	1pm-4pm	\$114	\$134

## WEEK 9 (AUGUST 1-AUGUST 5)

AGE	CLASS TITLE	DAY	TIME	MEMBER	NON MEMBER
4	Hats Off to Dr. Seuss	M/W	9am-Noon	\$49	\$69
4	Crazy About Critters	T/Th	9am-Noon	\$49	\$69
5&6	Art Around the World	M-F	9am-Noon	\$114	\$134
5&6	House Stories	M-F	1pm-4pm	\$114	\$134
7&8	Art Around the World	M-F	9am-Noon	\$114	\$134
7&8	House Stories	M-F	1pm-4pm	\$114	\$134
7-10	EARLY Robotics/Advanced Robotics	M-F	1pm-4pm	\$134	\$154

## WEEK 10 (AUGUST 8-AUGUST 12)

AGE	CLASS TITLE	DAY	TIME	MEMBER	NON MEMBER
4	Stamp Your Art Out	M/W	9am-Noon	\$49	\$69
4	Super Heroes Adventure	T/Th	9am-Noon	\$49	\$69
5&6	Scientifically ARTrageous	M-F	9am-Noon	\$114	\$134
5&6	A Taste of Texas	M-F	1pm-4pm	\$114	\$134
7&8	Scientifically ARTrageous	M-F	9am-Noon	\$114	\$134
7&8	A Taste of Texas	M-F	1pm-4pm	\$114	\$134

## WEEK 11 (AUGUST 15-AUGUST 18) \*4 day week

AGE	CLASS TITLE	DAY	TIME	MEMBER	NON MEMBER
4	A Box of Ideas	M/W	9am-Noon	\$49	\$69
4	Kitchen Chemistry	T/Th	9am-Noon	\$49	\$69
5&6	ARTrageous Workshop	M/T/W/Th	9am-Noon	\$94	\$114
5&6	LEGO® Frenzy Meets "Righteous" Robotiks	M/T/W/Th	1pm-4pm	\$94	\$114
7&8	ARTrageous Workshop	M/T/W/Th	9am-Noon	\$94	\$114
7&8	LEGO® Frenzy Meets "Righteous" Robotiks	M/T/W/Th	1pm-4pm	\$94	\$114



# FREQUENTLY ASKED QUESTIONS

## Q: IS THE MUSEUM A NON-PROFIT ORGANIZATION?

Yes! The Woodlands Children's Museum is a registered 501(c)3 non-profit organization. Donations are tax deductible to the extent allowed by law.

## Q: HOW DO YOU ACCOMMODATE MY CHILD'S NEEDS?

In order for us to be able to help your child have an enjoyable experience with us, we ask that you notify us at the time of registration of any allergies, accessibility concerns, behavioral, psychological, emotional conditions or other special needs. The Museum reserves the right to determine the compatibility of your child's needs within the program. The Museum is NOT responsible for administering medication to children. Please consult your pediatrician about altering the child's dosage so that medication can be administered outside of our program.

## Q: HOW ARE CHILDREN SUPERVISED?

Parents or guardians are required to physically bring their child(ren) into the Museum's atrium. Children are supervised at all times and escorted on bathroom breaks.

The Woodlands Children's Museum reserves the right to determine, at our discretion, that a child can be withdrawn from a workshop or request that he/she be accompanied by an adult if the program deems this to be warranted. There will be no refund in the event of our request that a child be withdrawn for disciplinary reasons.

## Q: MAY PARENTS STAY IN THE CLASSROOM?

Our programs promote independent learning and socialization. If you feel that your child is unable to remain in class without you for more than a few minutes, we suggest waiting a year before sending him/her to our workshops. Parents are required to sign out their child(ren) at the end of class.

## Q: WHO CAN I CONTACT DURING THE DAY IF I NEED TO LEAVE A MESSAGE CONCERNING MY CHILD?

Please call The Woodlands Children's Museum at 281-465-0955, and a staff person will deliver your message or E-mail our Educational Coordinator, Heather LaRoche at [hlaroche@woodlandschilddrensmuseum.org](mailto:hlaroche@woodlandschilddrensmuseum.org).

## Q: HOW SHOULD MY CHILD DRESS FOR THE CLASSES?

The best choice is comfortable clothes that may get messy, closed-toe shoes and a sweater, as the classrooms can get cool. Please do not allow your child to wear shoes with rollers.

## REGISTRATION

One registration form per child. Registration forms with incomplete or inaccurate information cannot be processed. Always select an alternate class in the event your first choice is not available. Fax registration forms to 281-465-0956

## CANCELLATIONS, EXCHANGES AND REFUNDS

Each registration with payment is considered a confirmed registration.

Registrations are not transferable from one child to another.

Please be advised that The Woodlands Children's Museum reserves the right to cancel classes in the event our classes do not meet a minimum enrollment. Patrons will receive a full refund. We appreciate your understanding.

Patrons who desire or need to cancel a registration will receive a 50% refund of the cost if notification is received at least 5 working days before class begins.

There are no refunds for registration cancelled or dropped less than 5 working days before class begins.

To receive a 50% refund, patrons must notify The Woodlands Children's Museum in writing (fax, mail or e-mail) or in person at The Woodlands Children's Museum no less than five working days prior to the first day of class.

## QUESTIONS AND CONCERNS

Contact us at 281-465-0955 Monday through Friday from 9:00 am to 4:00 pm or [museum@woodlandschilddrensmuseum.org](mailto:museum@woodlandschilddrensmuseum.org)

We believe that in the life of a young child it is the process that is more important than the product. The process of experimenting with various materials, the exploration of different techniques and the discovery of how it all comes together nurtures positive self-esteem and self-confidence while providing a more well-rounded experience.

# MUSEUM PROGRAM REGISTRATION

Student Information (One form per student - Please Print Neatly)

Child's Name \_\_\_\_\_ Date of Birth \_\_\_\_\_ Age \_\_\_\_\_ M / F

Contact Parent/Guardian \_\_\_\_\_ Phone \_\_\_\_\_ Mobile \_\_\_\_\_

Address \_\_\_\_\_ City \_\_\_\_\_ State \_\_\_\_\_ Zip \_\_\_\_\_

Email \_\_\_\_\_ Emergency Contact \_\_\_\_\_

Allergies/Medications \_\_\_\_\_ Other Conditions/Concerns \_\_\_\_\_

How did you hear about us? \_\_\_\_\_

Are you member of The Woodlands Children's Museum? No Yes Member# \_\_\_\_\_ Lunch bunch? No Yes

WEEK# CLASS START DATE NAME OF CLASS OR SESSION # FEE TOTAL


## RELEASE AND CONSENT

Although TWCM hopes that no student is ever injured or hurt, injuries are a possibility of participation in the Class. The risk of injury is a risk that the student and legal guardian(s) voluntarily agree to assume in exchange for the privilege of registering for and participating in the Class. The student and their guardian(s) understand and agree that this risk is not a risk that TWCM assumes and that TWCM is not responsible for any injuries to the students. Accordingly, \_\_\_\_\_ (the "guardian"), the legal guardian of \_\_\_\_\_ (the "student") voluntarily releases TWCM and their directors, officers, employees, volunteers, agents and all persons acting by, through, under or in concert with TWCM (collectively, the "Released parties") from any and all losses, demands, claims, suits, causes of action, liability, costs, expenses and judgments whether arising in equity, at common law, or by statute, under the law contract, torts, or property, for personal injury (including without limitation emotional distress), arising in favor of the guardian or the student based upon, in connection with, relation to or arising out of, directly or indirectly, the student's participation in the Class (collectively, "claims") AND EVEN IF ANY SUCH CLAIMS ARE DUE TO RELEASED PARTIES' OWN NEGLIGENCE, STRICT LIABILITY WITHOUT REGARD TO FAULT, VIOLATION OF STATUTE OR OTHER FAULT. The guardian and student hereby give their permission to the Released Parties to obtain emergency medical treatment for the student if the Released Party deems in its discretion that such emergency medical treatment is necessary.

## PHOTO RELEASE

Children and/or their work may be photographed during the course of activities and these photographs may appear in The Woodlands Children's Museum's promotional materials such as brochures, Facebook, Twitter, Instagram or ads designed for publications. No child whose photograph is used will be identified by name, nor will any compensation be awarded for use of said photographs.

Parent/Guardian (Printed Name) \_\_\_\_\_ Date \_\_\_\_\_

Signature \_\_\_\_\_

REFUND POLICY: Patrons who notify the museum at least 5 business days before a class begins that they are unable to attend the class are eligible for a 50% refund. NO REFUNDS are given for cancellation less than 5 days before class begins.

TWCM reserves the right to cancel a class due to low enrollment at 4pm Friday before the class starts

**PAYMENT IS DUE IN FULL AT TIME OF REGISTRATION**

The Woodlands Children's Museum accepts checks, cash, or debit and credit cards. Faxed registration must include Credit Card information in order to be processed.

Charge: ☐ VISA ☐ MasterCard ☐ AMEX ☐ Discover

Name of Cardholder \_\_\_\_\_

Card # \_\_\_\_\_ CIV# \_\_\_\_\_ Expiration Date \_\_\_\_\_

CC Billing Address \_\_\_\_\_

Phone \_\_\_\_\_ Email \_\_\_\_\_

Signature \_\_\_\_\_ Date \_\_\_\_\_

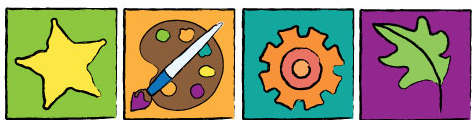
Submit completed registration forms to: The Woodlands Children's Museum Fax: 281-465-0956

4775 W. Panther Creek #280

E-Mail: [museum@woodlandschilrensmuseum.org](mailto:museum@woodlandschilrensmuseum.org)

The Woodlands, TX 77381





# THE WOODLANDS Children's MUSEUM

4775 W. PANTHER CREEK DR. #280  
THE WOODLANDS, TX 77381

NON-PROFIT ORG  
US POSTAGE  
PAID

## MARK YOUR CALENDARS!



MUSEUM'S  
BIRTHDAY  
JULY 15



SUPER  
HERO DAY  
AUGUST 12

MAGIC  
DAY  
JUNE 17



SHAKE YOUR  
SUMMER  
SILLIES OUT!  
AUGUST 19



educate  
empower  
excite  
[woodlandschildrensmuseum.org](http://woodlandschildrensmuseum.org)

LET'S  
MOVE!

good to  
grow!

ASSOCIATION OF  
CHILDREN'S  
MUSEUMS

Visit, stay and play! The Woodlands Children's Museum is ideal for children under 7 years old to explore the open exhibits especially designed for them. The Museum provides hands-on play experiences and daily interactive activities at 11 a.m. Admission fee is valid all day. Conveniently located in a shopping center, the museum is surrounded by different places to have a meal and come back to play.

MUSEUM HOURS: MON-SAT: 10AM-5PM  
SUN: NOON - 5PM

ADMISSION: \$6 per person (Adults and Children)  
Children under 1 are FREE.  
Members are FREE.

OPEN 7 DAYS A WEEK  
MEMORIAL DAY  
MAY 30TH  
TO LABOR DAY  
SEPTEMBER 5TH

FOLLOW  
US

